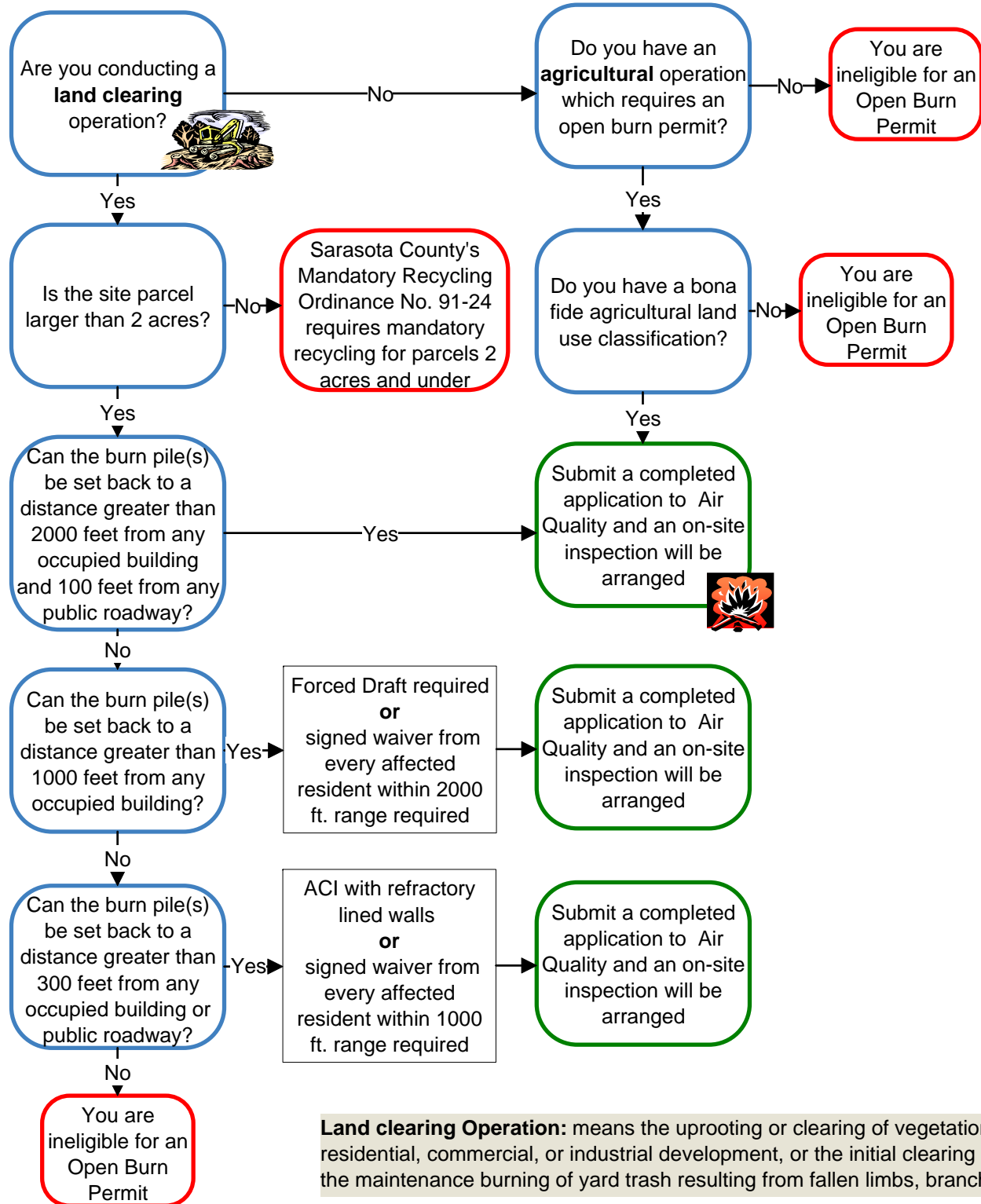


Open Burn Permitting Process



Land clearing Operation: means the uprooting or clearing of vegetation in connection with construction for buildings, rights of way, residential, commercial, or industrial development, or the initial clearing of vegetation to enhance property value, but does not include the maintenance burning of yard trash resulting from fallen limbs, branches, or leaves, or any other routine property cleanup activities.