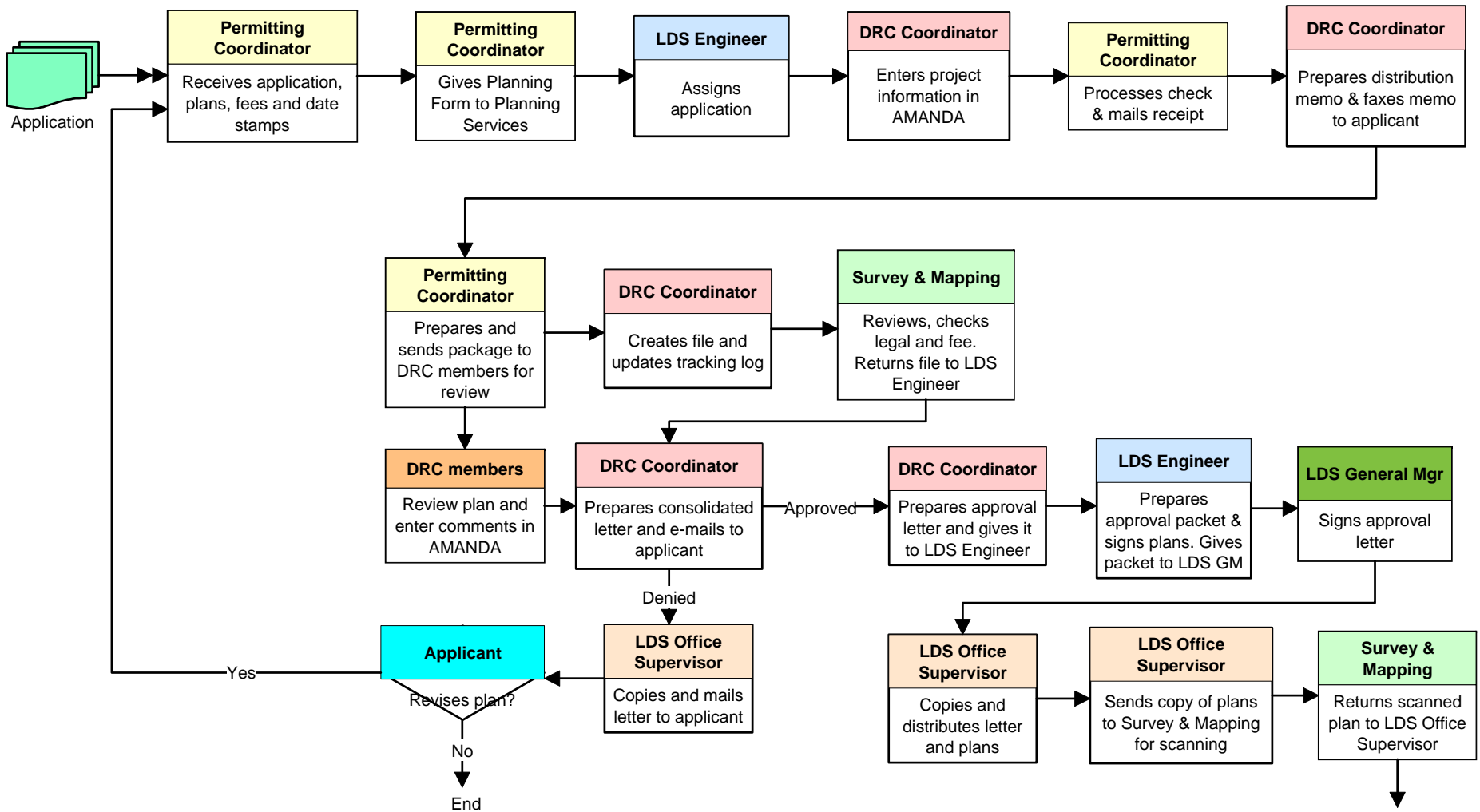


Concurrent Subdivision & Concurrent Commercial Plan Review Process



Development Review Committee (DRC) Members

- Transportation Planning
- LDS Engineer
- Utilities
- Health
- Tree Protection
- Water Resource
- Resource Protection
- Zoning
- Forestry Public Works (if needed)
- Design Standards (if needed)
- Landscape
- Stormwater or Public Works Stormwater
- Fire
- Historical (1st review only unless insufficient)
- SCAT (1st review only)
- Planning Services (if needed)
- Traffic Operations (if needed)
- FDOT (if needed)
- Road Program (if needed)
- Parks (if needed)